

W-Series Fiberglass

General Features

W-Series fiberglass stations are available with one, two, three or four grinder pumps. Each station includes: the grinder pump(s), check valve, tank, controls, and alarm panel(s).

- Standard outdoor heights range from 60 inches to 144 inches
- Several tank diameters available; refer to the station drawings for specific sizes
- Flow ratings and tank capacities will vary with each tank size and number of grinder pumps; consult the factory for more information

The WH pump is the “hardwired,” or “wired,” model where a cable connects the motor controls to the level controls through watertight penetrations.

The WR pump is the “radio frequency identification” (RFID), or “wireless,” model that uses wireless technology to communicate between the level controls and the motor controls.

Operational Information

Motor

1 hp, 1,725 rpm, high torque, capacitor start, thermally protected, 120/240V, 60 Hz, 1 phase

Inlet Connections

4-inch and 6-inch EPDM grommets for DWV or DR35 pipe

Discharge Connections

Pump discharge terminates in 1.25-inch NPT female thread. Can easily be adapted to 1.25-inch PVC pipe or any other material required by local codes.

Discharge

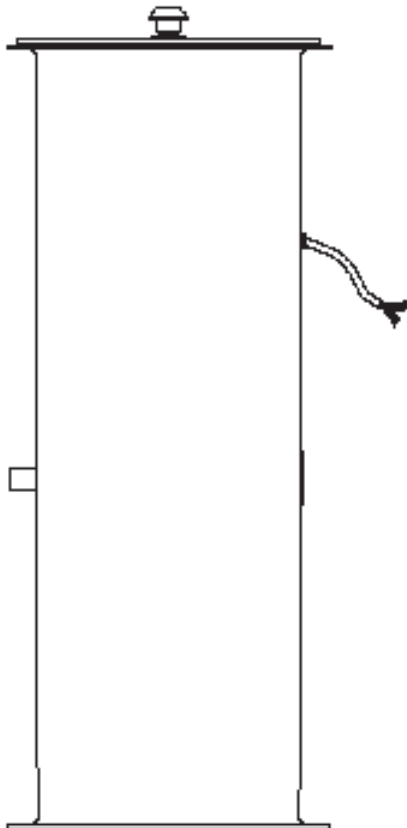
15 gpm at 0 psig (0.95 lps at 0 m)
11 gpm at 40 psig (0.69 lps at 28 m)
7.8 gpm at 80 psig (0.49 lps at 56 m)

Accessories

E/One requires that the Uni-Lateral, E/One’s own stainless steel check valve, be installed between the grinder pump station and the street main for added protection against backflow.

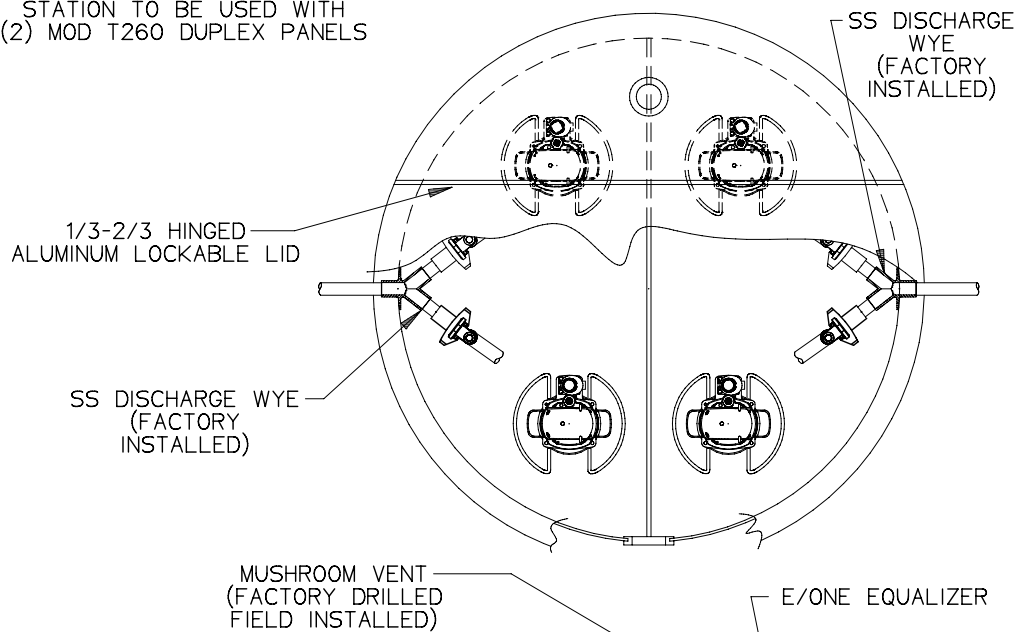
Alarm panels are available with a variety of options, from basic monitoring to advanced notice of service requirements.

The Remote Sentry is ideal for installations where the alarm panel may be hidden from view.



Patent Numbers: 5,752,315
5,562,254 5,439,180

STATION TO BE USED WITH
(2) MOD T260 DUPLEX PANELS



DIAMETER CHOICES

"D"

1.52 ☐

1.83 ☐

W SERIES
QUADPLEX
STATIONS

HEIGHT CHOICES

COVER OVER DISCH CHOICES

"H" COD RANGE

1.52 (.61) ☐

1.68 (.61-.76) ☐

1.83 (.61-.91) ☐

1.98 (.61-1.07) ☐

2.13 (.61-1.22) ☐

2.29 (.61-1.37) ☐

2.44 (.61-1.52) ☐

2.59 (.61-1.68) ☐

2.74 (.61-1.83) ☐

2.90 (.61-1.98) ☐

3.05 (.61-2.13) ☐

3.20 (.61-2.29) ☐

3.35 (.61-2.44) ☐

3.51 (.61-2.59) ☐

3.66 (.61-2.74) ☐

"COD"

0.61 ☐

0.76 ☐

0.91 ☐

1.07 ☐

1.22 ☐

1.37 ☐

1.52 ☐

1.68 ☐

1.83 ☐

1.98 ☐

2.13 ☐

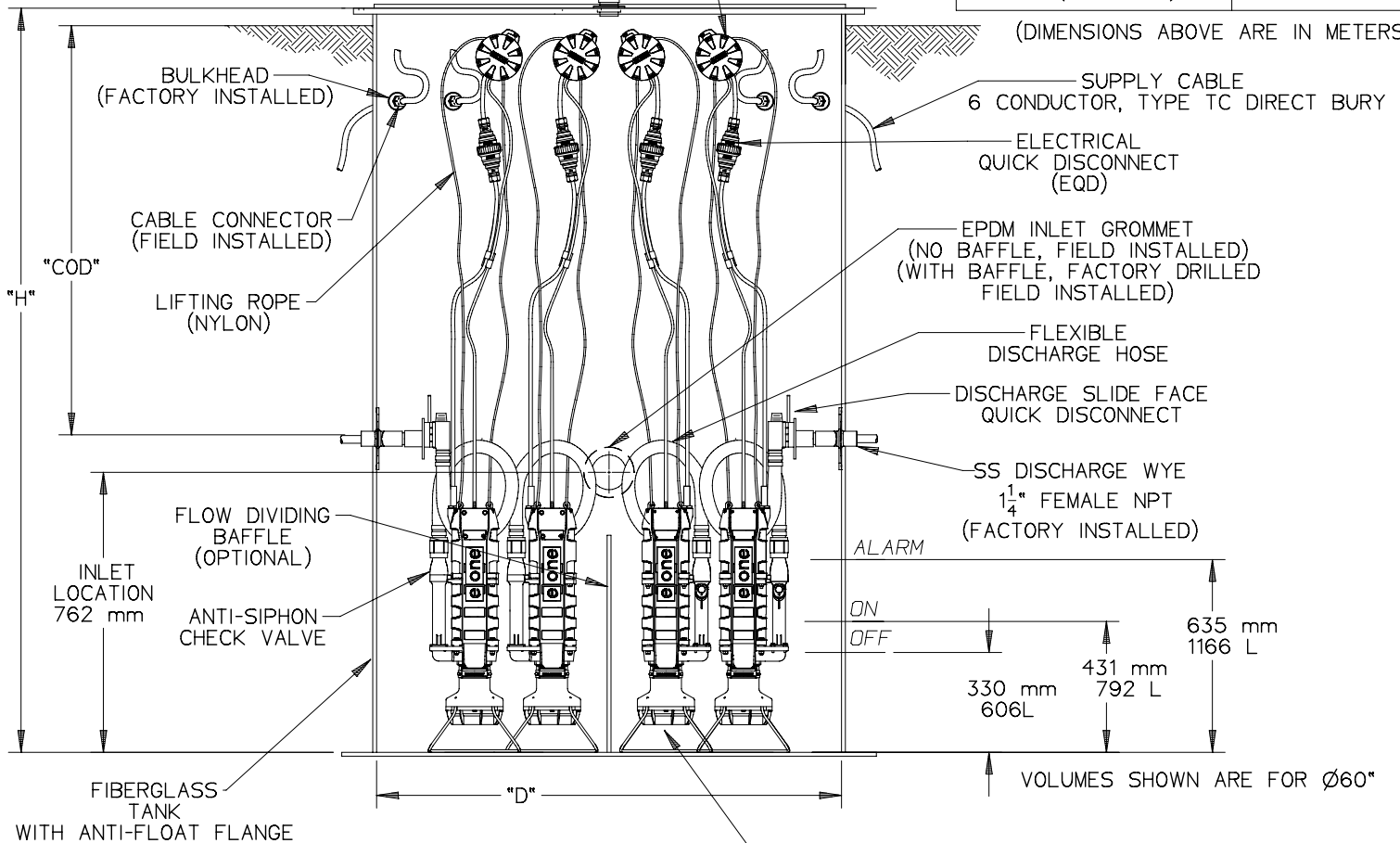
2.29 ☐

2.44 ☐

2.59 ☐

2.74 ☐

(DIMENSIONS ABOVE ARE IN METERS)



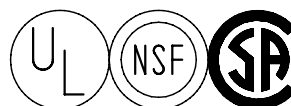
FOUR SEMI-POSITIVE DISPLACEMENT TYPE PUMP
DIRECTLY DRIVEN BY 1 HP MOTOR

INLET CHOICES

- 4" DWV PIPE (4.50 OD) ☐
- 4" DR35 PIPE (4.22 OD) ☐
- 6" DWV PIPE (6.63 OD) ☐
- 6" DR35 PIPE (6.28 OD) ☐
- 8" DWV PIPE (8.63 OD) ☐
- 8" DR35 PIPE (8.40 OD) ☐

NOTE:

- 4" & 6" INLETS ARE EPDM GROMMETS
- 8" DWV INLET IS A CAST IRON CAULKING HUB
- 8" DR35 INLET IS A CAST IRON CAULKING HUB AND A FERNCO FITTING



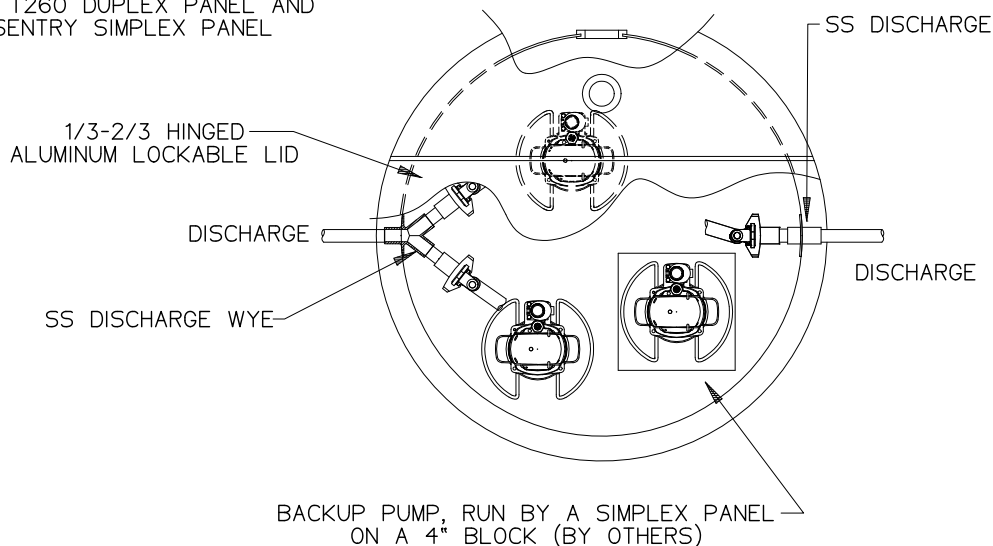
PJS		12-10-10	-	1/32
DR BY	CHK'D	DATE	ISSUE	SCALE



DETAIL SHEET
W SERIES QUADPLEX, METRIC

NA0154P02

STATION TO BE USED WITH
 (1) MOD T260 DUPLEX PANEL AND
 (1) SENTRY SIMPLEX PANEL



DIAMETER CHOICES

"D"
 48 ☐
 60 ☐

W SERIES
 TRIPLEX
 STATIONS

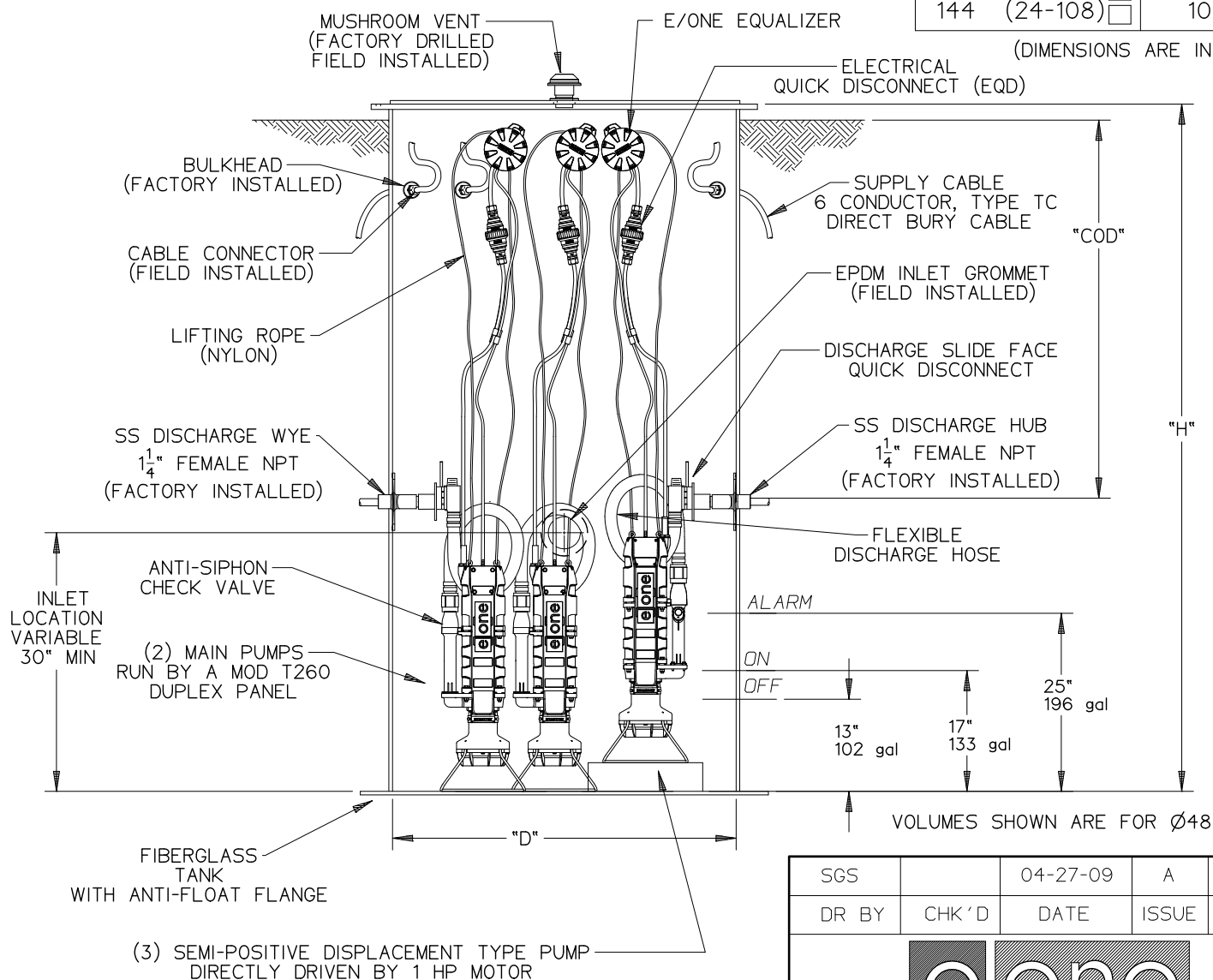
HEIGHT CHOICES

"H"	COD RANGE
60	(24)
66	(24-30)
72	(24-36)
78	(24-42)
84	(24-48)
90	(24-54)
96	(24-60)
102	(24-66)
108	(24-72)
114	(24-78)
120	(24-84)
126	(24-90)
132	(24-96)
138	(24-102)
144	(24-108)

COVER OVER DISCH CHOICES

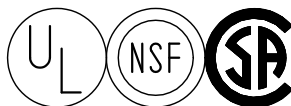
"COD"
24
30
36
42
48
54
60
66
72
78
84
90
96
102
108

(DIMENSIONS ARE IN INCHES)



INLET CHOICES

4" DWV PIPE (4.50 OD)	<input type="checkbox"/>
4" DR35 PIPE (4.22 OD)	<input type="checkbox"/>
6" DWV PIPE (6.63 OD)	<input type="checkbox"/>
6" DR35 PIPE (6.28 OD)	<input type="checkbox"/>



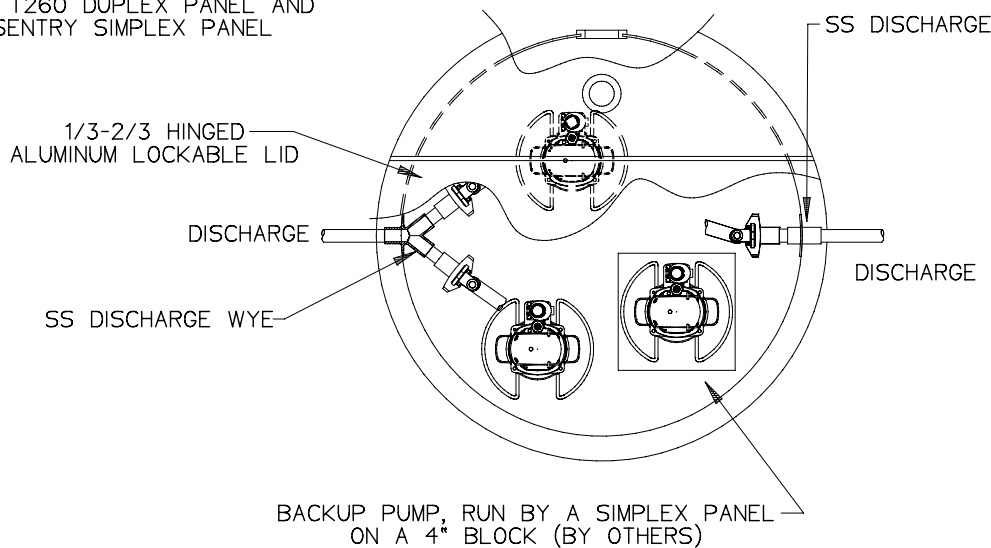
SGS		04-27-09	A	1/32
DR BY	CHK'D	DATE	ISSUE	SCALE



DETAIL SHEET
 W SERIES TRIPLEX

NA0155P01

STATION TO BE USED WITH
 (1) MOD T260 DUPLEX PANEL AND
 (1) SENTRY SIMPLEX PANEL



DIAMETER CHOICES

"D"
 1.22 ☐
 1.52 ☐

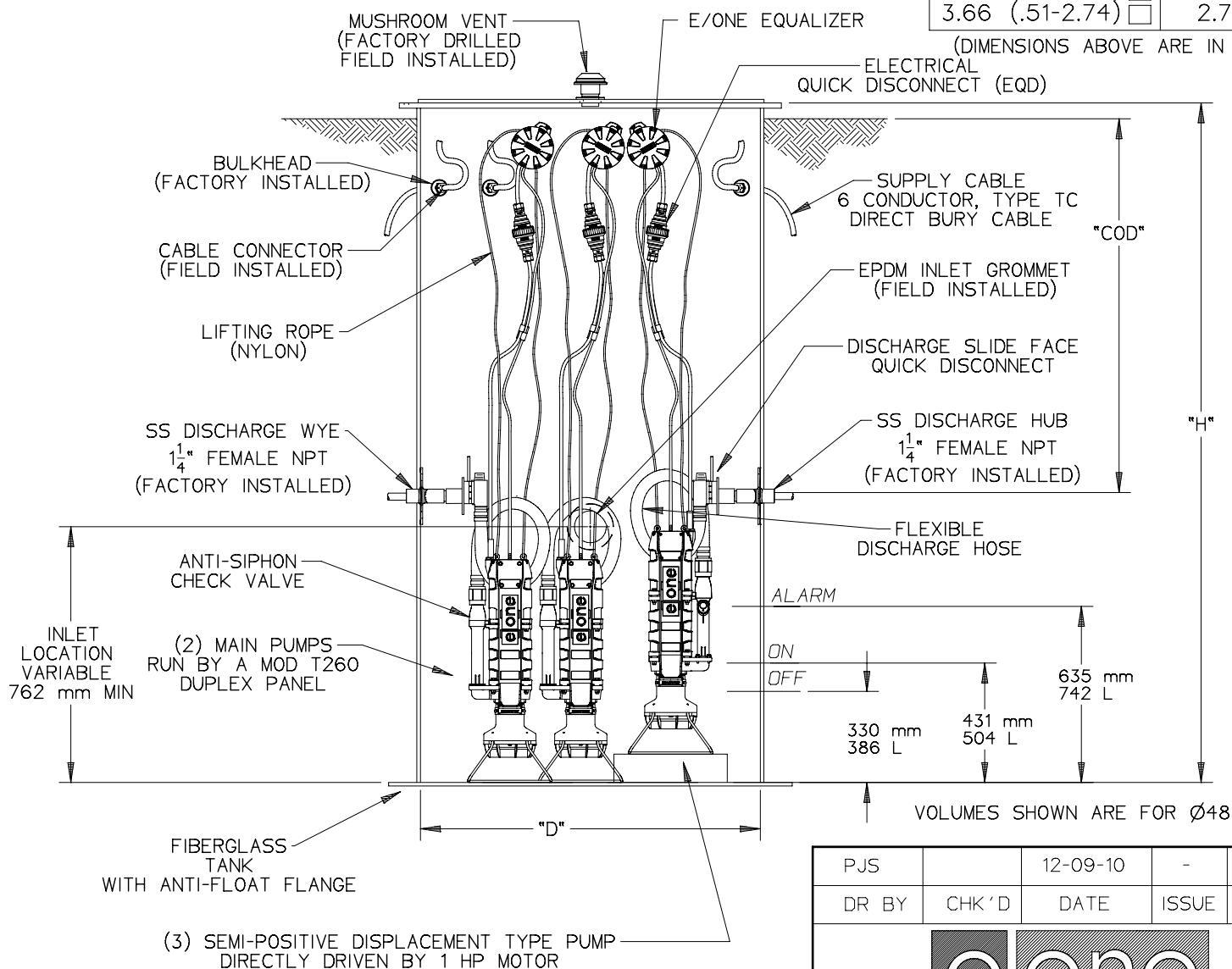
W SERIES
 TRIPLEX
 STATIONS

HEIGHT CHOICES

COVER OVER DISCH CHOICES

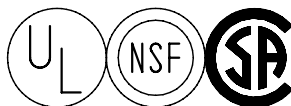
"H"	COD RANGE		"COD"	
1.52	(.61)	<input type="checkbox"/>	0.61	<input type="checkbox"/>
1.68	(.61-.76)	<input type="checkbox"/>	0.76	<input type="checkbox"/>
1.83	(.61-.91)	<input type="checkbox"/>	0.91	<input type="checkbox"/>
1.98	(.61-1.07)	<input type="checkbox"/>	1.07	<input type="checkbox"/>
2.13	(.61-1.22)	<input type="checkbox"/>	1.22	<input type="checkbox"/>
2.29	(.61-1.37)	<input type="checkbox"/>	1.37	<input type="checkbox"/>
2.44	(.61-1.52)	<input type="checkbox"/>	1.52	<input type="checkbox"/>
2.59	(.61-1.68)	<input type="checkbox"/>	1.68	<input type="checkbox"/>
2.74	(.61-1.83)	<input type="checkbox"/>	1.83	<input type="checkbox"/>
2.90	(.61-1.98)	<input type="checkbox"/>	1.98	<input type="checkbox"/>
3.05	(.61-2.13)	<input type="checkbox"/>	2.13	<input type="checkbox"/>
3.20	(.61-2.29)	<input type="checkbox"/>	2.29	<input type="checkbox"/>
3.35	(.61-2.44)	<input type="checkbox"/>	2.44	<input type="checkbox"/>
3.51	(.61-2.59)	<input type="checkbox"/>	2.59	<input type="checkbox"/>
3.66	(.51-2.74)	<input type="checkbox"/>	2.74	<input type="checkbox"/>

(DIMENSIONS ABOVE ARE IN METERS)



INLET CHOICES

4" DWV PIPE (4.50 OD)	<input type="checkbox"/>
4" DR35 PIPE (4.22 OD)	<input type="checkbox"/>
6" DWV PIPE (6.63 OD)	<input type="checkbox"/>
6" DR35 PIPE (6.28 OD)	<input type="checkbox"/>



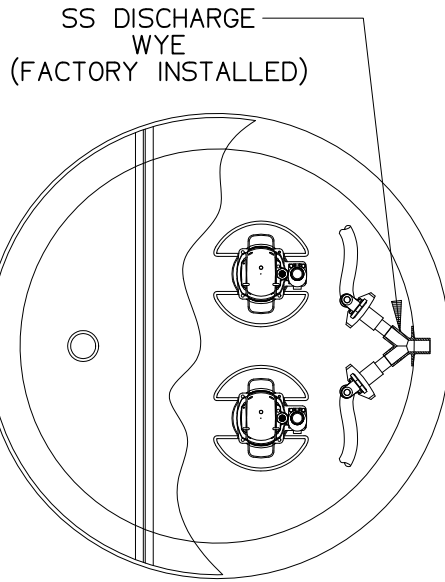
PJS		12-09-10	-	1/32
DR BY	CHK'D	DATE	ISSUE	SCALE



DETAIL SHEET
 W SERIES TRIPLEX, METRIC

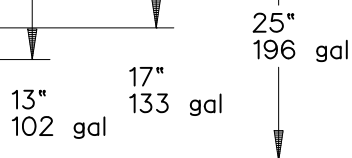
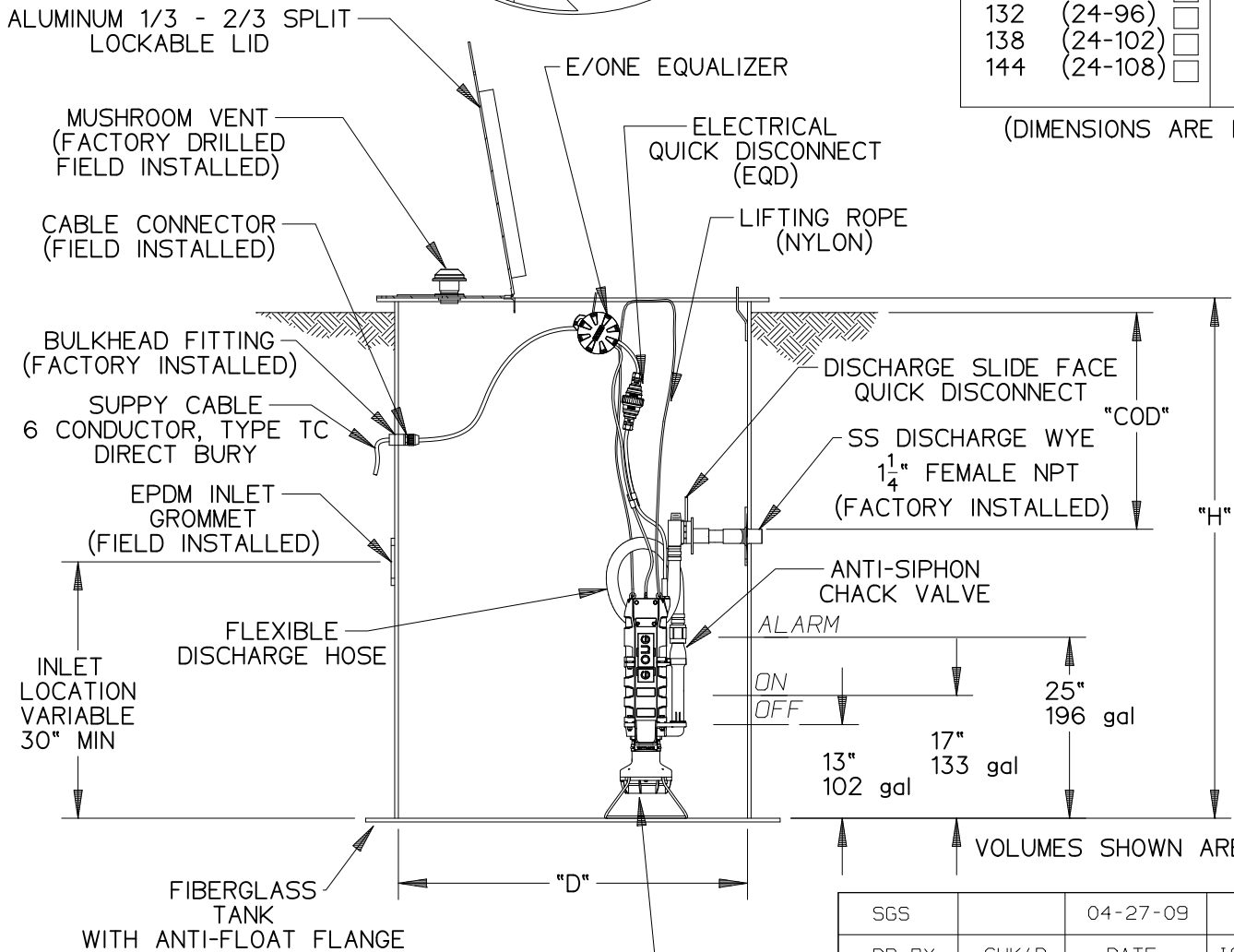
NA0155P02

STATION TO BE USED WITH
(1) MOD T260 DUPLEX PANEL



DIAMETER CHOICES		W SERIES DUPLEX STATIONS	
"D"			
36	<input type="checkbox"/>		
42	<input type="checkbox"/>		
48	<input type="checkbox"/>		
60	<input type="checkbox"/>		
HEIGHT CHOICES		COVER OVER DISCH CHOICES	
"H"	COD RANGE	"COD"	
60	(24)	24	<input type="checkbox"/>
66	(24-30)	30	<input type="checkbox"/>
72	(24-36)	36	<input type="checkbox"/>
78	(24-42)	42	<input type="checkbox"/>
84	(24-48)	48	<input type="checkbox"/>
90	(24-54)	54	<input type="checkbox"/>
96	(24-60)	60	<input type="checkbox"/>
102	(24-66)	66	<input type="checkbox"/>
108	(24-72)	72	<input type="checkbox"/>
114	(24-78)	78	<input type="checkbox"/>
120	(24-84)	84	<input type="checkbox"/>
126	(24-90)	90	<input type="checkbox"/>
132	(24-96)	96	<input type="checkbox"/>
138	(24-102)	102	<input type="checkbox"/>
144	(24-108)	108	<input type="checkbox"/>

(DIMENSIONS ARE IN INCHES)



VOLUMES SHOWN ARE FOR Ø48"

INLET CHOICES	
4" DWV PIPE (4.50 OD)	<input type="checkbox"/>
4" DR35 PIPE (4.22 OD)	<input type="checkbox"/>
6" DWV PIPE (6.63 OD)	<input type="checkbox"/>
6" DR35 PIPE (6.28 OD)	<input type="checkbox"/>



SGS		04-27-09	A	1/32
DR BY	CHK'D	DATE	ISSUE	SCALE

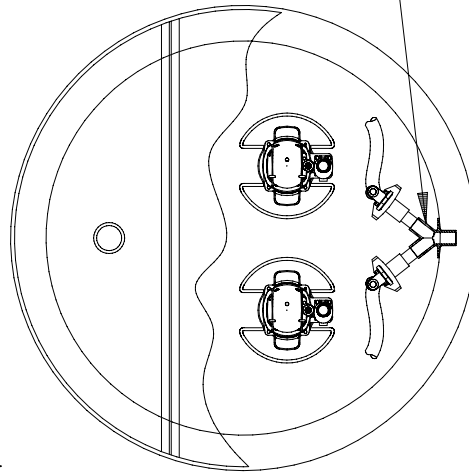


DETAIL SHEET,
W SERIES DUPLEX

NA0156P01

STATION TO BE USED WITH
(1) MOD T260 DUPLEX PANEL

SS DISCHARGE
WYE
(FACTORY INSTALLED)



DIAMETER CHOICES

"D"
0.91 ☐
1.07 ☐
1.22 ☐
1.52 ☐

W SERIES
DUPLEX
STATIONS

HEIGHT CHOICES

"H"	COD RANGE		"COD"	
1.52	(.61)	<input type="checkbox"/>	0.61	<input type="checkbox"/>
1.68	(.61-.76)	<input type="checkbox"/>	0.76	<input type="checkbox"/>
1.83	(.61-.91)	<input type="checkbox"/>	0.91	<input type="checkbox"/>
1.98	(.61-1.07)	<input type="checkbox"/>	1.07	<input type="checkbox"/>
2.13	(.61-1.22)	<input type="checkbox"/>	1.22	<input type="checkbox"/>
2.29	(.61-1.37)	<input type="checkbox"/>	1.37	<input type="checkbox"/>
2.44	(.61-1.52)	<input type="checkbox"/>	1.52	<input type="checkbox"/>
2.59	(.61-1.68)	<input type="checkbox"/>	1.68	<input type="checkbox"/>
2.74	(.61-1.83)	<input type="checkbox"/>	1.83	<input type="checkbox"/>
2.90	(.61-1.98)	<input type="checkbox"/>	1.98	<input type="checkbox"/>
3.05	(.61-2.13)	<input type="checkbox"/>	2.13	<input type="checkbox"/>
3.20	(.61-2.29)	<input type="checkbox"/>	2.29	<input type="checkbox"/>
3.35	(.61-2.44)	<input type="checkbox"/>	2.44	<input type="checkbox"/>
3.51	(.61-2.59)	<input type="checkbox"/>	2.59	<input type="checkbox"/>
3.66	(.61-2.74)	<input type="checkbox"/>	2.74	<input type="checkbox"/>

COVER OVER
DISCH CHOICES

ALUMINUM 1/3 - 2/3 SPLIT
LOCKABLE LID

MUSHROOM VENT
(FACTORY DRILLED
FIELD INSTALLED)

CABLE CONNECTOR
(FIELD INSTALLED)

BULKHEAD FITTING
(FACTORY INSTALLED)

SUPPLY CABLE
6 CONDUCTOR, TYPE TC
DIRECT BURY

EPDM INLET
GROMMET
(FIELD INSTALLED)

INLET
LOCATION
VARIABLE
762 mm MIN

FLEXIBLE
DISCHARGE HOSE

FIBERGLASS
TANK
WITH ANTI-FLOAT FLANGE

E/ONE EQUALIZER

ELECTRICAL
QUICK DISCONNECT
(EQD)

LIFTING ROPE
(NYLON)

(DIMENSIONS ABOVE ARE IN METERS)

DISCHARGE SLIDE FACE
QUICK DISCONNECT

SS DISCHARGE WYE
1 1/4" FEMALE NPT
(FACTORY INSTALLED)

ANTI-SIPHON
CHECK VALVE

ALARM

ON
OFF

330 mm
386 L

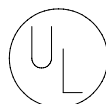
635 mm
742 L

VOLUMES SHOWN ARE FOR Ø48"

SEMI-POSITIVE DISPLACEMENT TYPE PUMP
DIRECTLY DRIVEN BY 1 HP MOTOR

INLET CHOICES

4" DWV PIPE (4.50 OD) ☐
4" DR35 PIPE (4.22 OD) ☐
6" DWV PIPE (6.63 OD) ☐
6" DR35 PIPE (6.28 OD) ☐



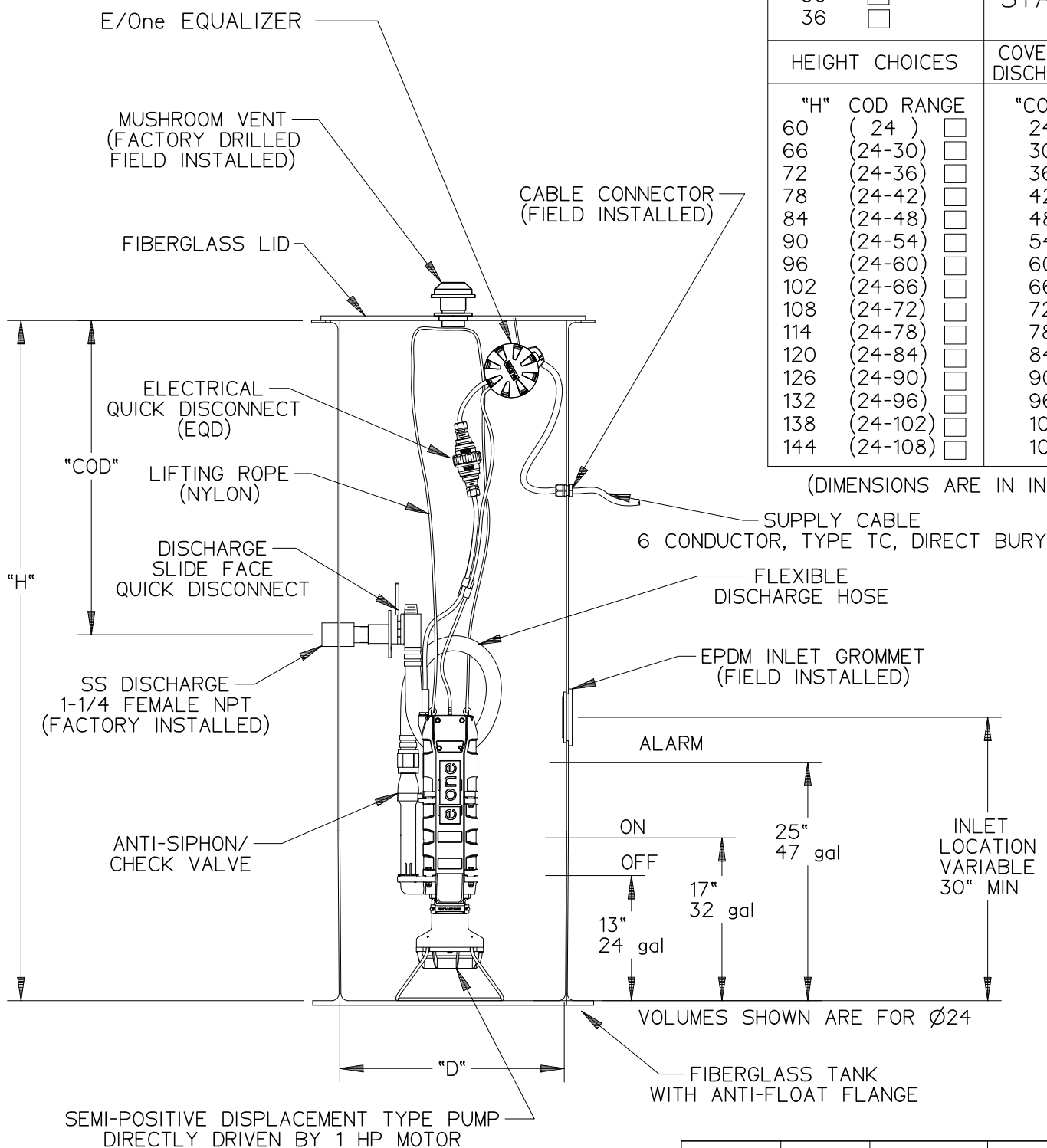
PJS		12-09-10	-	1/32
DR BY	CHK'D	DATE	ISSUE	SCALE

e one
SEWER SYSTEMS

DETAIL SHEET,
W SERIES DUPLEX, METRIC

NA0156P02

STATION TO BE USED WITH
(1) SENTRY SIMPLEX PANEL



DIAMETER CHOICES

"D"

24 ☐

30 ☐

36 ☐

W SERIES
SIMPLEX
STATIONS

HEIGHT CHOICES

"H" COD RANGE

60 (24) ☐

66 (24-30) ☐

72 (24-36) ☐

78 (24-42) ☐

84 (24-48) ☐

90 (24-54) ☐

96 (24-60) ☐

102 (24-66) ☐

108 (24-72) ☐

114 (24-78) ☐

120 (24-84) ☐

126 (24-90) ☐

132 (24-96) ☐

138 (24-102) ☐

144 (24-108) ☐

COVER OVER DISCH CHOICES

"COD"

24 ☐

30 ☐

36 ☐

42 ☐

48 ☐

54 ☐

60 ☐

66 ☐

72 ☐

78 ☐

84 ☐

90 ☐

96 ☐

102 ☐

108 ☐

(DIMENSIONS ARE IN INCHES)

INLET CHOICES

4" DWV PIPE (4.50 OD) ☐

4" DR35 PIPE (4.22 OD) ☐

6" DWV PIPE (6.63 OD) ☐

6" DR35 PIPE (6.28 OD) ☐

SGS

04-27-09

A

1/16

DR BY

CHK'D

DATE

ISSUE

SCALE



DETAIL SHEET,
W SERIES SIMPLEX

NA0157P01



STATION TO BE USED WITH
(1) SENTRY SIMPLEX PANEL

DIAMETER CHOICES

"D"

.610 ☐
.762 ☐
.914 ☐

W SERIES
SIMPLEX
STATIONS

HEIGHT CHOICES

COVER OVER DISCH CHOICES

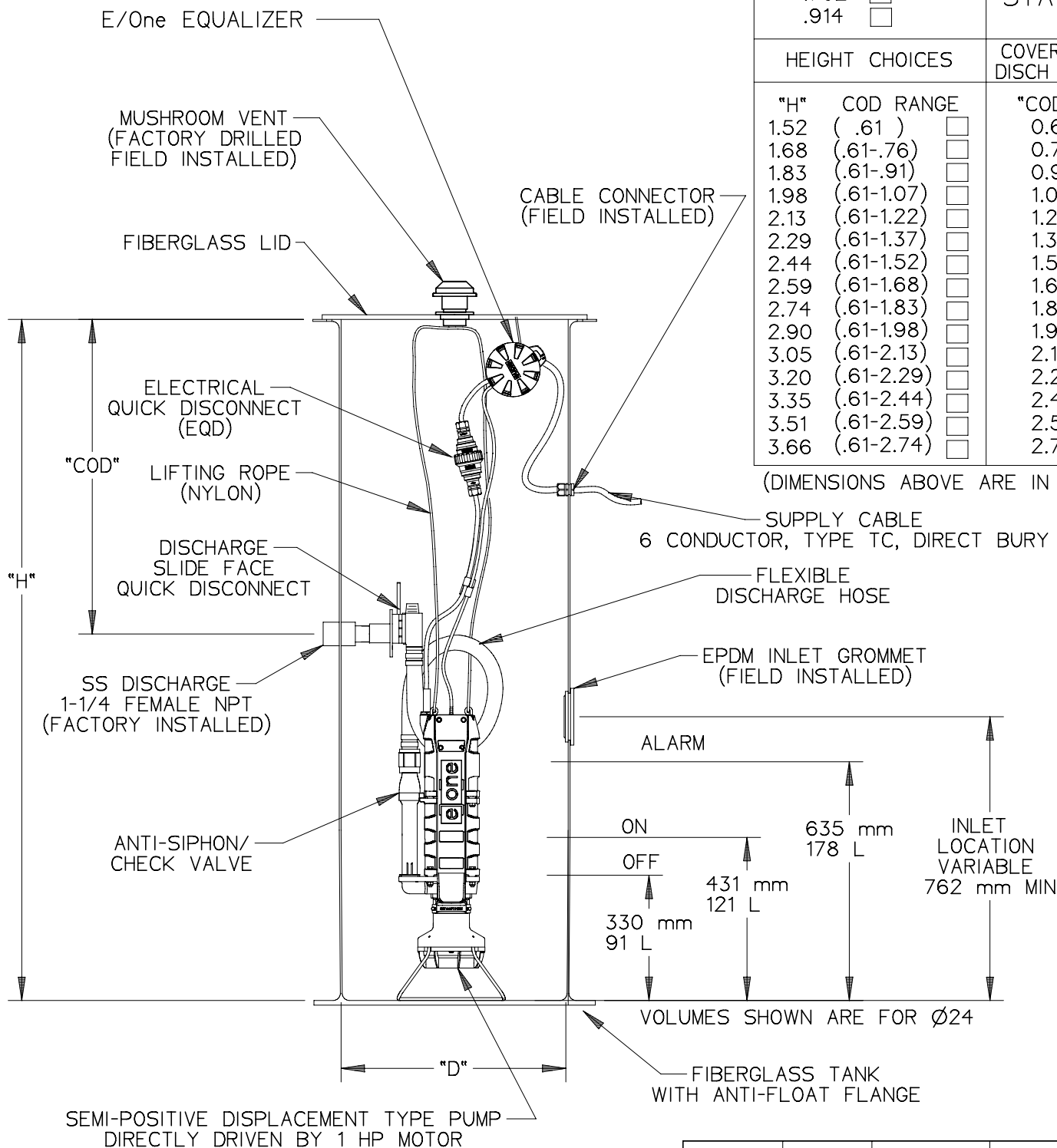
"H" COD RANGE

1.52 (.61) ☐
1.68 (.61-.76) ☐
1.83 (.61-.91) ☐
1.98 (.61-1.07) ☐
2.13 (.61-1.22) ☐
2.29 (.61-1.37) ☐
2.44 (.61-1.52) ☐
2.59 (.61-1.68) ☐
2.74 (.61-1.83) ☐
2.90 (.61-1.98) ☐
3.05 (.61-2.13) ☐
3.20 (.61-2.29) ☐
3.35 (.61-2.44) ☐
3.51 (.61-2.59) ☐
3.66 (.61-2.74) ☐

"COD"

0.61 ☐
0.76 ☐
0.91 ☐
1.07 ☐
1.22 ☐
1.37 ☐
1.52 ☐
1.68 ☐
1.83 ☐
1.98 ☐
2.13 ☐
2.29 ☐
2.44 ☐
2.59 ☐
2.74 ☐

(DIMENSIONS ABOVE ARE IN METERS)



INLET CHOICES

4" DWV PIPE (4.50 OD) ☐
4" DR35 PIPE (4.22 OD) ☐
6" DWV PIPE (6.63 OD) ☐
6" DR35 PIPE (6.28 OD) ☐

PJS

12-09-10

-

1/16

DR BY

CHK'D

DATE

ISSUE

SCALE



DETAIL SHEET,
W SERIES SIMPLEX, METRIC

NA0157P02

